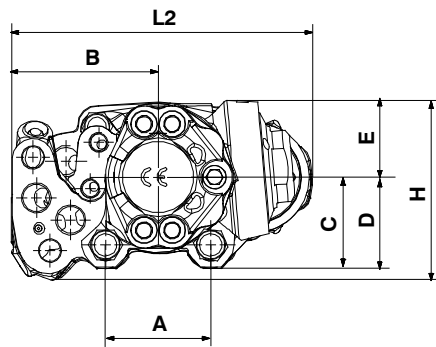
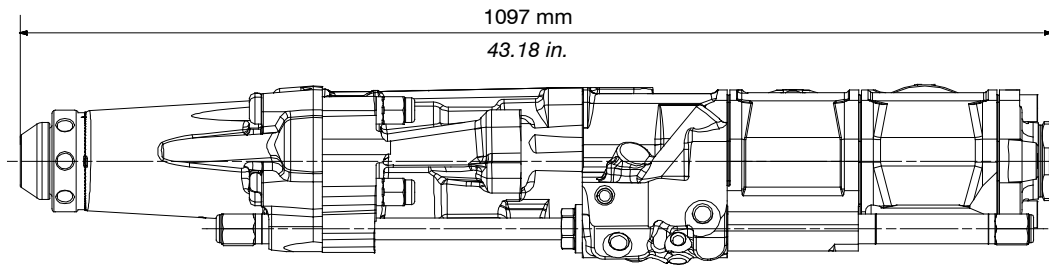


HC109



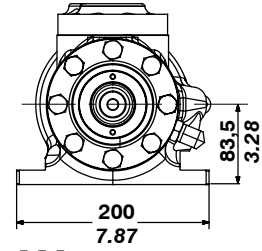
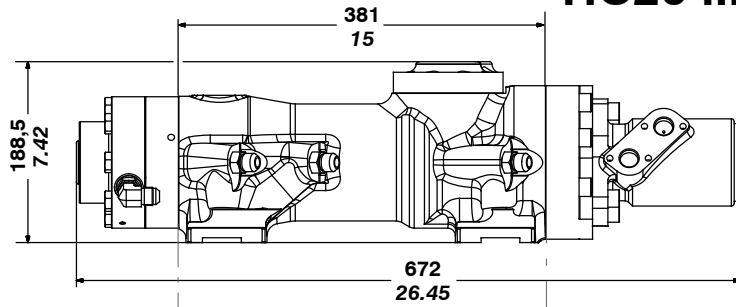
	mm	in.
L2	320	12.6
A	112	4.4
B	156	6.14
C	72	2.83
D	97	3.81
E	80	3.14
H	190	7.48

Type	independent rotation			
Max. strike flow	l/mn	GPM	135	36
Max. strike pressure	bar	PSI	135	1959
Max. strike frequency with E piston	Hz	BPM	47	2800
Energy per blow	J	ft.lb	400	295
Max. rotation pressure	bar	PSI	150	2177
Rotation flow motor 024 (bit dia. ≤64 mm)	l/mn	GPM	30	8
Rotation speed motor 024	t/mn	RPM	210	210
Max. rotation torque motor 024	Nm	ft.lb	340	250
Rotation flow motor 031 (bit dia. ≤76 mm)	l/mn	GPM	45	12
Rotation speed motor 031	t/mn	RPM	230	230
Max. rotation torque motor 031	Nm	ft.lb	440	324
Rotation flow motor 043 (bit dia. ≤76 mm)	l/mn	GPM	60	16
Rotation speed motor 043	t/mn	RPM	220	220
Max. rotation torque motor 043	Nm	ft.lb	610	449
Rotation flow motor 055 (bit dia. ≤89 mm)	l/mn	GPM	60	16
Rotation speed motor 055	t/mn	RPM	175	175
Max. rotation torque motor 055	Nm	ft.lb	780	574
Drain flow approx.	l/mn	GPM	8	2
Water flushing pressure	bar	PSI	10 to 12	145 to 174
Water flushing flow	l/mn	GPM	30 to 50	8 to 13
Air flushing pressure	bar	PSI	8 to 12	116 to 174
Air flushing flow	m ³ /mn	CFM	10	358
Front guide lubrication pressure	bar	PSI	3	44
Front guide lubrication air flow	l/mn	GPM	300	79
Front guide lubrication oil			6 drops/mn	6 drops/mn
Weight	daN	lb	142	313
Rod diameter	mm	in.	38 – 45	1 1/2 – 1 3/4
Accu Nitrogen pressure HP	bar	PSI	40	580
Accu Nitrogen pressure LP	bar	PSI	4	58
Oil viscosity	cSt	cSt	ISO VG 32 / ISO VG 46	ISO VG 32 / ISO VG 46
Oil temperature	°C	°F	40 to 60	104 to 140
Air and water flushing temperature	°C	°F	5 to 40	41 to 104
Maximum required feed force	N	lbf	15000	3372

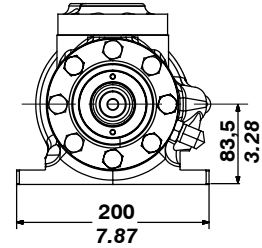
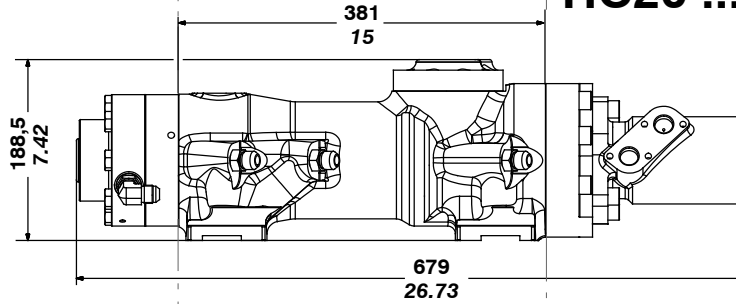


Please consult us before using specific oil (non – inflammable, biodegradable, ...).

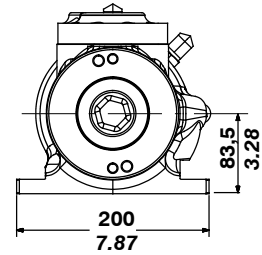
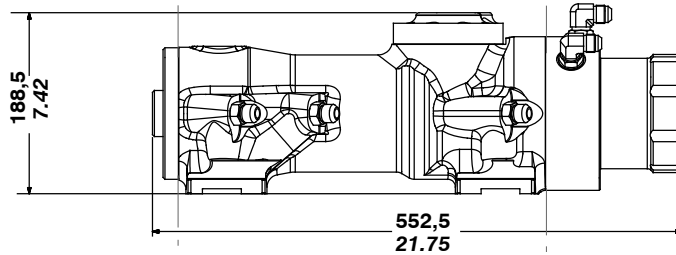
HC20 ...M050..W..



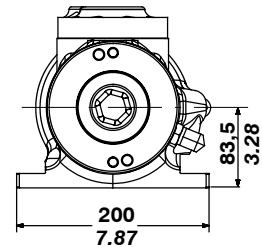
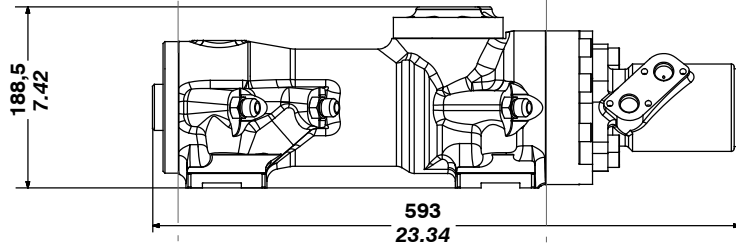
HC20 ...M100..W..



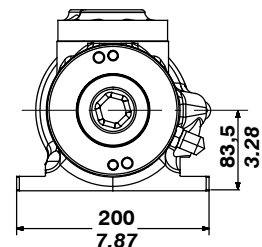
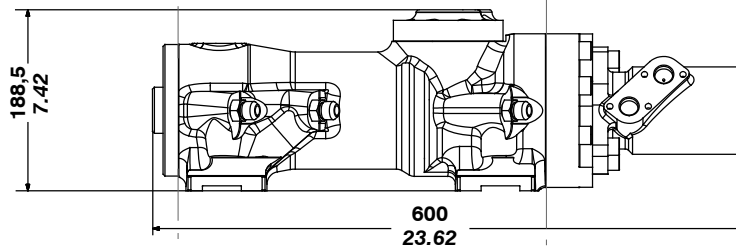
HC20 ...D067..A..



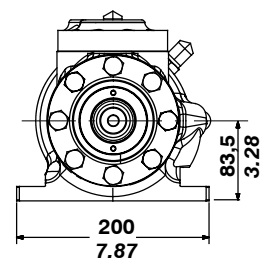
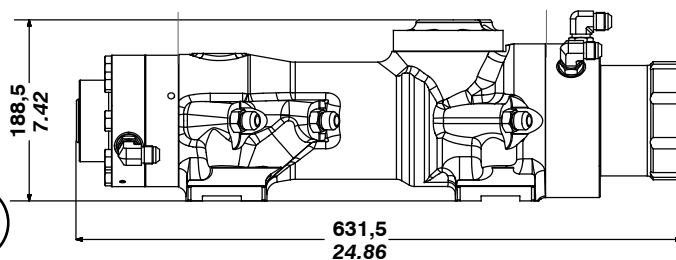
HC20 ...M050..A..



HC20 ...M100..A..



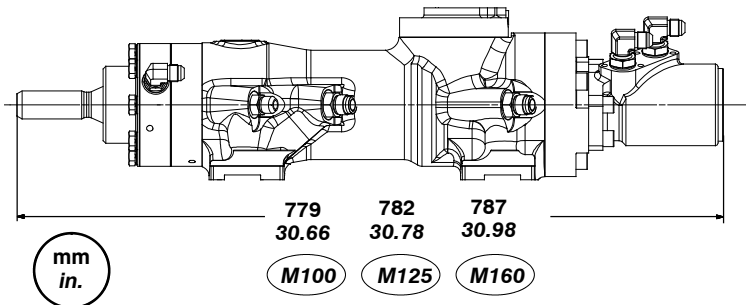
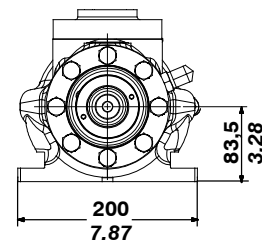
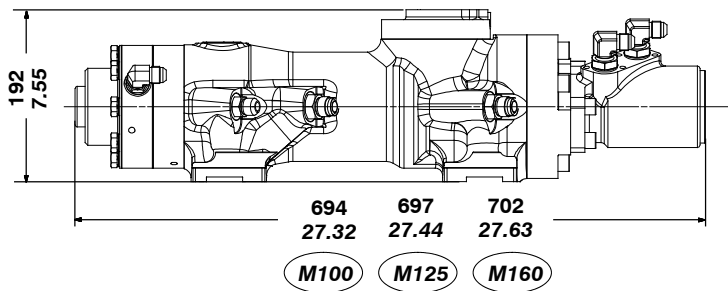
HC20 ...D067..W..



mm
in.

Strike flow	l/mn	<i>GPM</i>	45			11.9		
Strike pressure maxi	bar	<i>PSI</i>	140			2031		
Strike frequency maxi	Hz	<i>BPM</i>	50			3000		
Energy per blow	J	<i>ft-lb</i>	90			67		
Rotation motor			D-67	M-50	M-100	D-67	M-50	M-100
Rotation flow maxi	l/mn	<i>GPM</i>	30	20	30	7.9	5.3	7.9
Rotation pressure maxi	bar	<i>PSI</i>	140			2031		
Max rotation torque	Nm	<i>ft-lb</i>	150	100	200	110	73	147
Rotation speed setting	t/mn	<i>RPM</i>	150 – 300			150 – 300		
Water flushing pressure	bar	<i>PSI</i>	15			217		
Water flushing flow	l/mn	<i>GPM</i>	30			7.9		
Air flushing pressure	bar	<i>PSI</i>	4 – 10			58 – 145		
Air flushing + dust collector	m3/mn	<i>CFM</i>	2,5			89		
Front guide lubrication pressure	bar	<i>PSI</i>	0,5			8		
Front guide lubrication air flow	l/mn	<i>GPM</i>	200			53		
Rod type	mm	<i>in</i>	H22 – H25 – R25 – R32			H22 – H25 – R25 – R32		

HC25 ...M100..W.. ...M125 ...M160

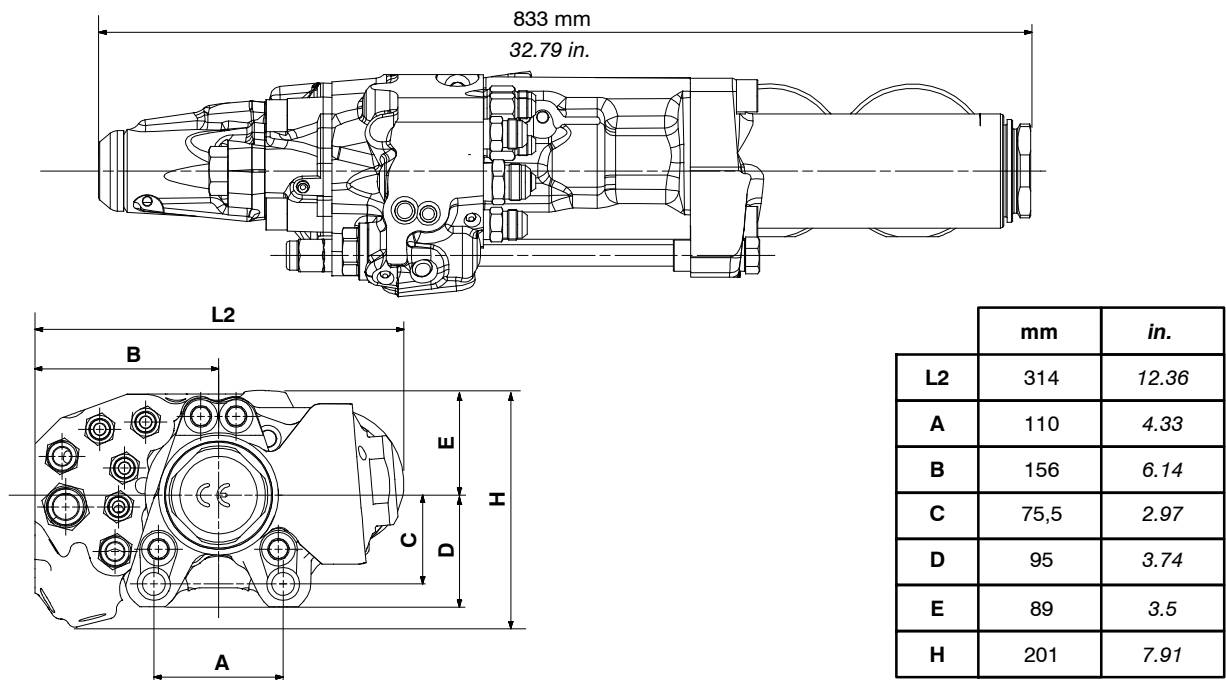


Strike flow	l/mn	GPM	55 – 65			14 – 17		
Strike pressure	bar	PSI	110 – 150			1600 – 2150		
Strike frequency	Hz	BPM	55 – 65			3300 – 3900		
Energy per blow	J	ft-lb	110 – 150			81 – 111		
Rotation motor			M100	M125	M160	M100	M125	M160
Rotation flow maximum	l/mn	GPM	30	37,5	48	7,9	9,9	12,6
Rotation pressure maximum	bar	PSI	140			2031		
Rotation torque maximum	Nm	ft-lb	205 – 250 – 320			152 – 185 – 236		
Rotation speed setting	t/mn	RPM	180 – 300			180 – 300		
Water flushing pressure	bar	PSI	10 – 15			140 – 215		
Water flushing flow	l/mn	GPM	20 – 30			5.3 – 8		
Air flushing pressure	bar	PSI	6 – 10			86 – 145		
Air flushing	m3/mn	CFM	3			105		
Front guide lubrication pressure	bar	PSI	1			15		
Front guide lubrication air flow	l/mn	GPM	200			53		
Front guide lubrication oil			6 drops/mn			6 drops/mn		
Rod type – male/female	mm	in	R32			R32		
Recommanded feed force	daN	lbf	600 – 750			1350 – 1690		
Accumulator nitrogen pressure	bar	PSI	35			508		
Accumulator volume	cm3	inch3	127,5			7,8		
Oil viscosity	cSt	cSt	ISO VG 32 / ISO VG 46			ISO VG 32 / ISO VG 46		
Oil temperature	°C	°F	40 to 60			104 to 140		
Air and Water flushing temperature	°C	°F	5 to 40			41 to 104		



Please consult us before using specific oil (non-inflammable, biodegradable, ...).

HC50



Type	independent rotation			
Max. strike flow	l/mn	GPM	105	28
Max. strike pressure	bar	PSI	130	1886
Max. strike frequency with E piston	Hz	BPM	62	3700
Energy per blow	J	ft.lb	210	155
Max. rotation pressure	bar	PSI	150	2177
Rotation flow motor 043 (bit dia. ≤76 mm)	l/mn	GPM	30	8
Max. rotation speed motor 043	t/mn	RPM	210	210
Max. rotation torque motor 043	Nm	ft.lb	325	239
Rotation flow motor 055 (bit dia. ≤89 mm)	l/mn	GPM	35	9
Max. rotation speed motor 055	t/mn	RPM	195	195
Max. rotation torque motor 055	Nm	ft.lb	415	306
Drain flow approx.	l/mn	GPM	4	1
Water flushing pressure	bar	PSI	8 ↗ 10	116 ↗ 145
Water flushing flow	l/mn	GPM	25	7
Air flushing pressure	bar	PSI	7 ↗ 8	102 ↗ 116
Air flushing flow	m ³ /mn	CFM	5	179
Front guide lubrication pressure	bar	PSI	3	44
Front guide lubrication air flow	l/mn	GPM	300	79
Front guide lubrication oil			6 drops/mn	6 drops/mn
Weight	daN	lb	102	225
Rod diameter	mm	in.	32 – 38	1"1/4 – 1"1/2
Max. recommended feed force	daN	lbf	1200	2700
Accu Nitrogen pressure HP	bar	PSI	35	508
Accu Nitrogen pressure LP	bar	PSI	4	58
Oil viscosity	cSt	cSt	ISO VG 32 / ISO VG 46	ISO VG 32 / ISO VG 46
Oil temperature	°C	°F	40 to 60	104 to 140
Air and water flushing temperature	°C	°F	5 to 40	41 to 104



Please consult us before using specific oil (non-inflammable, biodegradable, ...).



TECHNICAL SPECIFICATIONS

TYPE	HC95	LM
Applications		Mining
WEIGHT	Kg	185
Overall LENGHT wo/w shank	mm	1033 / 1162
Overall WIDTH	mm	294
HEIGHT above shank axis	mm	88
FLUSHING air/water		40 - 80l/mn
AIR- lubricated drifter front end	l/mn	3bar - 300l/mn
POWER IN (max for percussion)	Kw	33- 47
Percussion Flow Nominal, (min- max)	l/mn	135, (115- 140)
Rotation Flow	l/mn	50 - 75
Percussion Pressure Nominal, (min- max)	bar	180, (170- 200)
Energy per blow (max)	Joule	320
Frequency (max)	blow/mn	4100
POWER OUT (max for percussion)	Kw	22
Rotation Torque/capacity/bar	Nm	480 - 950
		(100cc- 200cc) 210bar
Rotation Speed (max)	RPM	proportionnal
		287 (100cc / 50l/mn)
		230 (125cc / 50l/mn)
		269 (160cc / 75l/mn)
		215 (200cc / 75l/mn)
Feed force:nominal (min,max)	daN	1300 (1100- 1400)
Collaring:feed force/Perc	ussion pressure/flow	1000 daN / 110bar / 85l/mn
Striking bar type		Dia45 : T38 - R38 - T45